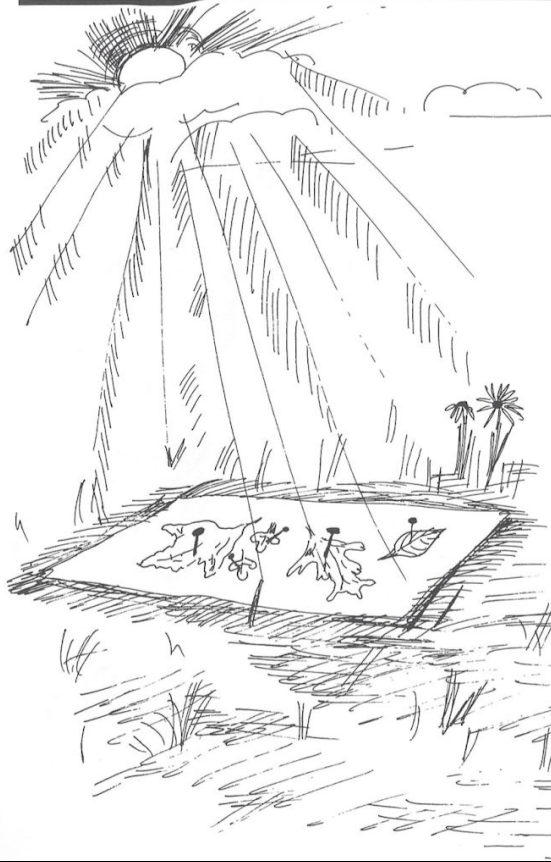


2 & up



EASY SUN PRINT



MATERIALS:

leaf
colored construction paper (or other soft colored paper)
bright sunshine
sewing pins or rocks

PROCESS:

1. Pin leaves to colored paper, or weight with rocks.
(Note: For best leaf prints, rocks should not extend over edges of leaves.)
2. Place in sunshine for about 1 hour.
3. Remove from sunshine and remove leaves.
4. The silhouette will be left.

VARIATIONS:

1. Make sun prints of toys, tools, utensils.
2. Try for a planned design made from cutting cardboard or paper shapes.
3. Try making "name sun prints" from the letters of the alphabet pre-cut and arranged on the colored paper.

5 & up



NATURE GATHERINGS



MATERIALS:

piece of a log, wood, or driftwood
white glue
small objects gathered from nature such as:
pine cones bracket fungi
leaves small branches
paper
scissors
markers or crayons
paints and brush

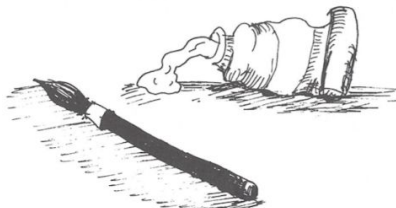
PROCESS:

1. Glue natural objects such as pine cones and leaves or small branches and twigs on a piece of wood.
2. Use paints or markers to add design.
3. Cut out paper and glue onto the art design, if desired.

VARIATIONS:

Try making a nature scene on a piece of wood —

1. Use branches, twigs, and pine cones to represent grass and trees.
2. Use paints to create rivers or lakes.
3. Add cut-out animals, people, or buildings.



NATURE MOBILE



6 & up

MATERIALS:

branch or stick

natural collected objects such as:

pebbles leaves twigs apples
pine cones wildflowers nuts mushrooms
string, twine, or thread

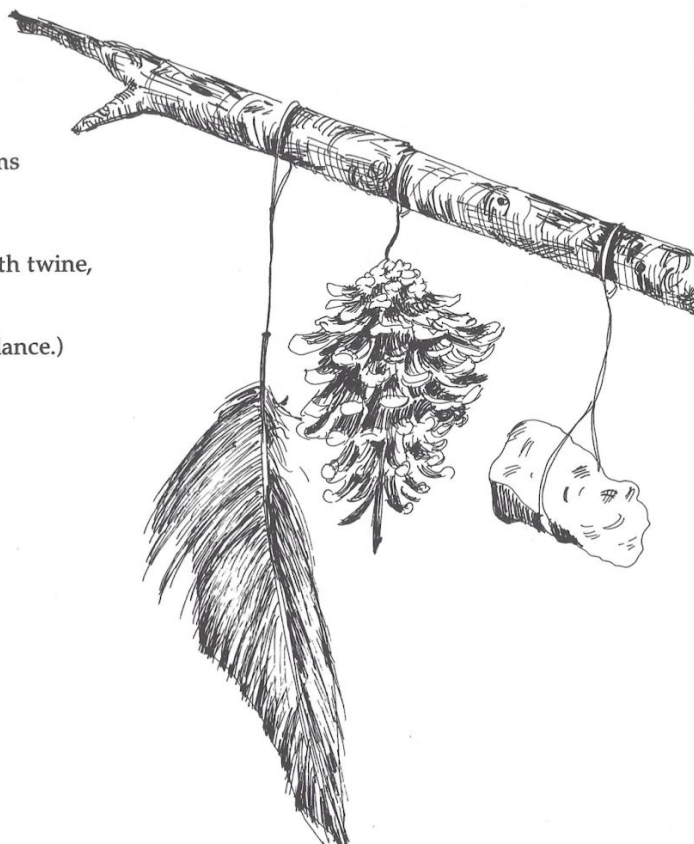
PROCESS:

1. Tie collected nature objects to branch or stick with twine, string, or thread.
2. Tie twine or string onto branch to hang.
(Hint: You may need more than one piece for balance.)

VARIATIONS:

Try a theme mobile:

1. feather mobile
2. wildflower mobile
3. pine cone mobile
4. seaside mobile
5. woods mobile
6. autumn mobile
7. "My Nature Walk" mobile



SHADOW DRAWING



5 & up

MATERIALS:

large piece of paper
pens
sunlight and shadow

PROCESS:

1. Find a shadow you like.
2. Place paper on ground so that shadow is on paper.
3. Draw around the outline of the shadow.
4. Your drawing is complete.

VARIATIONS:

1. Paint or color in some of the spaces or designs outlined in pen.
2. Use same paper to add more shadows, overlapping lines if desired.
3. Make a theme drawing such as "Objects on the Playground", "My Favorite Friends", "Flowers of Spring", and so on.
4. Have someone trace your own shadow. Then paint or color the drawing to be you or an imaginary form of you.
5. Trace a shadow on the sidewalk with chalk.

